

HEAVY HARDWARE CATALOG

Quality. Substance. Style.

HMI

INNOVATORS IN GLASS

Why HMI *hinges?*

Since 1946, HMI has consistently striven for *technical excellence* in our products. Our deep *knowledge* of shower glass and hardware is evident within our *collection of products that last*.

- Lifetime Warranty
- Shim Kit included with all wall mount hinges (*excluding adjustable)
- Both Allen & Phillips head screws for hinge plates
- All hinges constructed of brass material
- Textured gaskets to accommodate 10mm & 12mm glass
- Square style internal springs (*excluding adjustable)
3x stronger than industry standard
- Test rating exceeds industry standard
- H Plate design on all wall mount hinges for closer tolerance installations
- Full CNC hinge body cylinders
- 5° reversible hinge pin
- Protective plastic covering around inner hinge assembly
- Bump stops on both opening & closing side of hinge (*excluding adjustable)
- Removable mouse ear pins on all heavy style hinges



Hinges at a *glance*

HMI Heavy Glass hinges are designed with 2 distinct edge profiles - *beveled and squared*. Please refer to table contents for a complete list of hinge and hardware options.



GENISIS
(HGTWS)



CASSINI
(HPVT)



VIKING
(HGTWSH)



PIONEER
(HGTW)



CALYPSO
(HGTWH)



PHOENIX
(HPVT)



SENIOR PHOENIX
(SRHPVT)

Hardware Finishes:



Chrome



Oil Rubbed
Bronze



Gold



Matte
Black



Champagne
Bronze



Brushed
Nickel



Polished
Nickel



Roman
Bronze

Table of Contents

Why HMI Hinges?.....	2	HMIB90	36
At A Glance	3	HMIB135	37
Hinges Dot Matrix	5	HMIB180	38
Clamps & Clips Dot Matrix.....	6	HMISU4	39
Pulls Dot Matrix	7	HMIS90.....	40
Towel Bars Dot Matrix	8	HMIS180	41
Knobs Dot Matrix	8	HMIND4	42
Hooks Dot Matrix	8	HMISL90.....	43
Headers Dot Matrix.....	9	HMIS37R.....	44
U-Channel Dot Matrix	9	HMIS37L.....	45
		HMIS91	46
		HMISL135	47
PIONEER			
PIR037	10	PULLS	
PIR337	11	HMIB6X6 & HMIB8X8.....	48
PIR044	12	HMI6SM & HMIB8X8	49
PIR045	13	HMILP6X6	50
PIR180	14	HMILP8X8	51
PIR537	15	HMICR6X6.....	52
		HMISQ6X6	53
		HMISQ8X8	54
GENISIS		WASHERS	
GES037.....	16	HMI30WK.....	55
GES337.....	17		
GES044.....	18	TOWEL BARS	
GES045.....	19	HMITB16, HMITB18, HMITB20, HMITB22,	
GES180.....	20	HMITB24, HMITB27 & HMITB30	56
		HMIBTB18X18 & HMITB24X24.....	57
		HMIBTB6X18, HMIBTB6X20,	
		HMIBTB6X22, & HMIBTB6X24	58
CALYPSO			
CAL037	21	HOOKS	
CAL337	22	HMIRH	59
CAL537	23		
CAL044	24	KNOBS	
CAL180	25	HMIKSM	60
		HMICBTB	61
VIKING		HEADERS	
VIK037	26	ZSS4104A	62
VIK537	27	CHGCHK144 & CHGCHK72	63
VIK044	28	ZSS4102.....	64
VIK180	29	ZSS4103.....	65
		ZSS4104.....	66
		ZSS4504.....	67
		ZSS5103.....	68
		ZSS5104.....	69
PHOENIX			
PHX01	30	HEADER BRACKETS	
		C4101-A, C4101-135, C4101-90	
		& C4101-W	62
SENIOR PHOENIX			
SRPHX01	31		
CASSINI			
CAS01	32		
CLAMPS & CLIPS			
HMIB186.....	33		
HMIB188.....	34		
HMIBU4.....	35		

PRODUCT NAME	PART #	CH	DA	GO	MB	CB	NI	PN	RO
STANDARD HINGES									
PIONEER - Beveled Edge	PIR037	◆	◆	◆	◆	◆	◆	◆	◆
	PIR045	◆	◆	◆		◆	◆		◆
	PIR180	◆	◆	◆	◆	◆	◆	◆	◆
	PIR537	◆	◆				◆		◆
	PIR337	◆	◆	◆			◆		◆
	PIR044	◆	◆	◆	◆		◆	◆	◆
GENESIS - Square Edge									
	GES037	◆	◆	◆	◆	◆	◆	◆	◆
	GES045	◆	◆			◆	◆		
	GES180	◆	◆		◆	◆	◆	◆	◆
	GES337	◆	◆	◆	◆		◆		
	GES044	◆	◆	◆	◆		◆	◆	
HEAVY HINGES									
CALYPSO - Beveled Edge	CAL037	◆	◆	◆	◆	◆	◆	◆	◆
	CAL180	◆	◆		◆	◆	◆	◆	
	CAL337	◆	◆				◆		
	CAL537	◆	◆	◆	◆		◆		◆
	CAL044	◆	◆	◆	◆		◆	◆	◆
VIKING - Square Edge									
	VIK037	◆	◆	◆	◆	◆	◆	◆	◆
	VIK180	◆	◆		◆	◆	◆	◆	
	VIK537	◆	◆	◆			◆		◆
	VIK044	◆	◆	◆	◆		◆	◆	◆
PIVOT HINGES									
PHOENIX - Beveled Edge	PHX01	◆	◆		◆	◆	◆	◆	◆
SENIOR PHOENIX - Beveled Edge									
	SRPHX01	◆	◆		◆	◆	◆	◆	◆
CASSINI - Square Edge									
	CAS01	◆	◆		◆	◆	◆	◆	◆

PULLS

PRODUCT NAME	PART #	CH	DA	GO	MB	CB	NI	PN	RO	OB
HMI - Round	HMI6X6	◆			◆		◆	◆	◆	
	HMI8X8	◆			◆		◆	◆	◆	
	HMI6SM	◆	◆	◆		◆	◆		◆	◆
	HMI8SM	◆	◆	◆		◆	◆		◆	◆
	HMILP6X6	◆	◆		◆	◆	◆	◆		◆
	HMILP8X8	◆	◆	◆	◆	◆	◆	◆	◆	
	HMICR6X6	◆	◆		◆		◆			◆
HMI - Square	HMISQ6X6	◆	◆		◆		◆			◆
	HMISQ8X8	◆	◆		◆	◆	◆			
	HMI30WK	◆	◆	◆	◆	◆	◆	◆	◆	◆

PIONEER



Polished Nickel

STYLE PIR037

(CHG HGTW)

Standard Hinge
Beveled Edge

- Glazing Thickness: 5/16" to 1/2"
- Dimensions: 3 1/2"h x 2 3/16"w
- Material: Brass
- Maximum Door Weights:
 - 2 Hinges - 80 lbs.
 - 3 Hinges - 120 lbs.
- Maximum Door Widths:
 - 2 Hinges - 28"
 - 3 Hinges - 32"
- Self-Centering: yes with reversible 5° pivot pin
- Wall outage shims included

*Lifetime warranty for residential
3 year warranty for hospitality*



Oil Rubbed Bronze



Brushed Nickel



Gold



Chrome



Roman Bronze



Matte Black



Champagne Bronze



Oil Rubbed Bronze Painted



Yes, every HMI hinge includes our top of the line ribbed gasket for better grip on glass.

Make sure to pair with HMI *handles* and *clips*.

PIONEER



Brushed Nickel

STYLE PIR337

(CHG HGTWADJ)
Standard Hinge
Beveled Edge

- Glazing Thickness: 5/16" to 1/2"
- Dimensions: 3 1/2"h x 2 3/16"w
- Material: Brass
- Maximum Door Weights:
 - 2 Hinges - 80 lbs.
 - 3 Hinges - 120 lbs.
- Maximum Door Widths:
 - 2 Hinges - 28"
 - 3 Hinges - 32"

*Lifetime warranty for residential
3 year warranty for hospitality*



Oil Rubbed Bronze



Gold



Chrome



Roman Bronze



Matte Black



Yes, every HMI hinge includes our top of the line ribbed gasket for better grip on glass.

Make sure to pair with HMI *handles* and *clips*.

PIONEER



Polished Nickel

STYLE PIR044

(CHG HGTWOP)
Standard Hinge
Beveled Edge

- Glazing Thickness: 5/16" to 1/2"
- Dimensions: 3 1/2"h x 2 3/16"w
- Material: Brass
- Maximum Door Weights:
 - 2 Hinges - 80 lbs.
 - 3 Hinges - 120 lbs.
- Maximum Door Widths:
 - 2 Hinges - 28"
 - 3 Hinges - 32"
- Self-Centering: yes with reversible 5° pivot pins

*Lifetime warranty for residential
3 year warranty for hospitality*



Oil Rubbed Bronze

Brushed Nickel

Gold

Chrome

Roman Bronze

Matte Black



Yes, every HMI hinge includes our top of the line ribbed gasket for better grip on glass.

Make sure to pair with HMI *handles* and *clips*.

PIONEER

STYLE PIR045

(CHG H135GTG)
Standard Hinge
Beveled Edge



- Glazing Thickness: 5/16" to 1/2"
- Dimensions: 3 1/2"h x 2 3/16"w
- Material: Brass
- Maximum Door Weights:
 - 2 Hinges - 80 lbs.
 - 3 Hinges - 120 lbs.
- Maximum Door Widths:
 - 2 Hinges - 28"
 - 3 Hinges - 32"
- Self-Centering: yes with reversible 5° pivot pin
- Wall outage shims included

*Lifetime warranty for residential
3 year warranty for hospitality*



Yes, every HMI hinge includes our top of the line ribbed gasket for better grip on glass.

Make sure to pair with HMI *handles* and *clips*. | See page 00 for Technical Specifications.

PIONEER



Polished Nickel

STYLE PIR180

(CHG H180GTG)

Standard Hinge
Beveled Edge

- Glazing Thickness: 5/16" to 1/2"
- Dimensions: 3 1/2"h x 2 3/16"w
- Material: Brass
- Maximum Door Weights:
 - 2 Hinges - 80 lbs.
 - 3 Hinges - 120 lbs.
- Maximum Door Widths:
 - 2 Hinges - 28"
 - 3 Hinges - 32"
- Self-Centering: yes with reversible 5° pivot pin
- Wall outage shims included

*Lifetime warranty for residential
3 year warranty for hospitality*



Oil Rubbed Bronze



Brushed Nickel



Gold



Chrome



Champagne Bronze



Roman Bronze



Matte Black



Yes, every HMI hinge includes our top of the line ribbed gasket for better grip on glass.

Make sure to pair with HMI *handles* and *clips*.

PIONEER



Brushed Nickel

STYLE PIR537

(CHG HGTW5)

Standard Hinge

Beveled Edge

5° Pre-set Hinge

- Glazing Thickness: 5/16" to 1/2"
- Dimensions: 3 1/2"h x 2 3/16"w
- Material: Brass
- Maximum Door Weights:
 - 2 Hinges - 80 lbs.
 - 3 Hinges - 120 lbs.
- Maximum Door Widths:
 - 2 Hinges - 28"
 - 3 Hinges - 32"
- Self-Centering: yes with reversible 5° pivot pin
- Wall outage shims included

*Lifetime warranty for residential
3 year warranty for hospitality*



Oil Rubbed
Bronze



Chrome



Roman Bronze



Yes, every HMI hinge includes our top of the line ribbed gasket for better grip on glass.

Make sure to pair with HMI *handles* and *clips*.

GENESIS



STYLE GES037

(CHG HGTWS)
Squared Edge

- Glazing Thickness: 5/16" to 1/2"
- Dimensions: 3 1/2"h x 2 3/16"w
- Material: Brass
- Maximum Door Weights:
 - 2 Hinges - 80 lbs.
 - 3 Hinges - 120 lbs.
- Maximum Door Widths:
 - 2 Hinges - 28"
 - 3 Hinges - 32"
- Self-Centering: yes with reversible 5° pivot pin
- Wall outage shims included

*Lifetime warranty for residential
3 year warranty for hospitality*



Oil Rubbed
Bronze



Brushed Nickel



Gold



Chrome



Champagne
Bronze



Roman Bronze



Matte Black



Yes, every HMI hinge includes our top of the line ribbed gasket for better grip on glass.

Make sure to pair with HMI *handles* and *clips*.

GENESIS



STYLE GES337

(CHG HGTWSADJ)
Standard Hinge
Squared Edge
Adjustable

- Glazing Thickness: 5/16" to 1/2"
- Dimensions: 3 1/2"h x 2 3/16"w
- Material: Brass
- Maximum Door Weights:
 - 2 Hinges - 80 lbs.
 - 3 Hinges - 120 lbs.
- Maximum Door Widths:
 - 2 Hinges - 28"
 - 3 Hinges - 32"
- Self-Centering: yes

*Lifetime warranty for residential
3 year warranty for hospitality*



Oil Rubbed
Bronze



Chrome



Gold



Matte Black



Yes, every HMI hinge includes our top of the line ribbed gasket for better grip on glass.

Make sure to pair with HMI *handles* and *clips*.

GENESIS



Polished Nickel

STYLE GES044

(CHG HGTWOPS)

Standard Hinge

Squared Edge

Offset Back Plate Hinge

- Glazing Thickness: 5/16" to 1/2"
- Dimensions: 3 1/2"h x 2 3/16"w
- Material: Brass
- Maximum Door Weights:
 - 2 Hinges - 80 lbs.
 - 3 Hinges - 120 lbs.
- Maximum Door Widths:
 - 2 Hinges - 28"
 - 3 Hinges - 32"
- Self-Centering: yes with reversible 5° pivot pin
- Wall outage shims included

*Lifetime warranty for residential
3 year warranty for hospitality*



Oil Rubbed Bronze



Brushed Nickel



Gold



Chrome



Matte Black



Yes, every HMI hinge includes our top of the line ribbed gasket for better grip on glass.

Make sure to pair with HMI *handles* and *clips*.

GENESIS



Brushed Nickel

STYLE GES045

(CHG H135GTGS)
Standard Hinge
Squared Edge
135° Hinge

- Glazing Thickness: 5/16" to 1/2"
- Dimensions: 3 1/2"h x 2 3/16"w
- Material: Brass
- Maximum Door Weights:
 - 2 Hinges - 80 lbs.
 - 3 Hinges - 120 lbs.
- Maximum Door Widths:
 - 2 Hinges - 28"
 - 3 Hinges - 32"
- Self-Centering: yes with reversible 5° pivot pin
- Wall outage shims included

*Lifetime warranty for residential
3 year warranty for hospitality*



Oil Rubbed
Bronze



Champagne
Bronze



Chrome



Yes, every HMI hinge includes our top of the line ribbed gasket for better grip on glass.

Make sure to pair with HMI *handles* and *clips*.

GENESIS



Polished Nickel

STYLE GES180

(CHG H180GTGS)

Standard Hinge

Squared Edge

180° Glass to Glass Hinge

- Glazing Thickness: 5/16" to 1/2"
- Dimensions: 3 1/2"h x 2 3/16"w
- Material: Brass
- Maximum Door Weights:
 - 2 Hinges - 80 lbs.
 - 3 Hinges - 120 lbs.
- Maximum Door Widths:
 - 2 Hinges - 28"
 - 3 Hinges - 32"
- Self-Centering: yes with reversible 5° pivot pin

*Lifetime warranty for residential
3 year warranty for hospitality*



Oil Rubbed Bronze



Brushed Nickel



Chrome



Champagne Bronze



Roman Bronze



Matte Black



Yes, every HMI hinge includes our top of the line ribbed gasket for better grip on glass.

Make sure to pair with HMI *handles* and *clips*.

CALYPSO



STYLE CAL037

(CHG HGTWH)
Heavy Hinge
Beveled Edge

- Glazing Thickness: 3/8" to 1/2"
- Dimensions: 3 15/16"h x 2 1/4"w
- Material: Brass
- Maximum Door Weights:
2 Hinges - 110 lbs.
3 Hinges - 140 lbs.
- Maximum Door Widths: 36"
- Self-Centering: yes with reversible 5° pivot pin
- Wall outage shims included

*Lifetime warranty for residential
3 year warranty for hospitality*



Oil Rubbed
Bronze



Brushed Nickel



Gold



Chrome



Champagne
Bronze



Roman Bronze



Matte Black



Yes, every HMI hinge includes our top of the line ribbed gasket for better grip on glass.

Make sure to pair with HMI *handles* and *clips*.

CALYPSO



STYLE CAL337

(CHG HGTWH5)

Heavy Hinge

Beveled Edge

5° Pre-set Heavy Hinge

- Glazing Thickness: 3/8" to 1/2"
- Dimensions: 3 15/16"h x 2 5/16"w
- Material: Brass
- Maximum Door Weights:
 - 2 Hinges - 110 lbs.
 - 3 Hinges - 140 lbs.
- Maximum Door Widths: 36"
- Self-Centering: yes with reversible 5° pivot pin
- Wall outage shims included

*Lifetime warranty for residential
3 year warranty for hospitality*



Yes, every HMI hinge includes our top of the line ribbed gasket for better grip on glass.

Make sure to pair with HMI *handles* and *clips*.

CALYPSO



Brushed Nickel

STYLE CAL537

(CHG HGTWHADJ)

Heavy Hinge
Beveled Edge
Adjustable

- Glazing Thickness: 3/8" to 1/2"
- Dimensions: 3 15/16"h x 2 5/16"w
- Material: Brass
- Maximum Door Weights:
 - 2 Hinges - 110 lbs.
 - 3 Hinges - 140 lbs.
- Maximum Door Widths: 36"
- Self-Centering: yes

*Lifetime warranty for residential
3 year warranty for hospitality*



Oil Rubbed
Bronze



Chrome



Roman Bronze



Gold



Matte Black



Yes, every HMI hinge includes our top of the line ribbed gasket for better grip on glass.

Make sure to pair with HMI *handles* and *clips*.

CALYPSO



Polished Nickel

STYLE CAL044

(CHG HGTWOPH)

Heavy Hinge
Beveled Edge
Offset Back Plate

- Glazing Thickness: 3/8" to 1/2"
- Dimensions: 3 15/16"h x 2 1/4"w
- Material: Brass
- Maximum Door Weights:
 - 2 Hinges - 100 lbs.
 - 3 Hinges - 130 lbs.
- Maximum Door Widths:
 - 1/2" Glass - 32"
 - 3/8" Glass - 34"
- Self-Centering: yes with reversible 5° pivot pin
- Wall outage shims included

*Lifetime warranty for residential
3 year warranty for hospitality*



Oil Rubbed Bronze



Brushed Nickel



Gold



Chrome



Roman Bronze



Matte Black



Yes, every HMI hinge includes our top of the line ribbed gasket for better grip on glass.

Make sure to pair with HMI *handles* and *clips*.

CALYPSO



STYLE CAL180

(CHG H180GTGH)

Heavy Hinge

Beveled Edge

180° Glass to Glass

- Glazing Thickness: 3/8" to 1/2"
- Dimensions: 3 15/16"h x 2 1/4"w
- Material: Brass
- Maximum Door Weights:
 - 2 Hinges - 110 lbs.
 - 3 Hinges - 140 lbs.
- Maximum Door Widths: 36"
- Self-Centering: yes with reversible 5° pivot pin

*Lifetime warranty for residential
3 year warranty for hospitality*



Oil Rubbed
Bronze



Brushed Nickel



Champagne Bronze



Chrome



Matte Black



Yes, every HMI hinge includes our top of the line ribbed gasket for better grip on glass.

Make sure to pair with HMI *handles* and *clips*.

VIKING



STYLE VIK037

(CHG HGTWSH)

Heavy Hinge

Squared Edge

- Glazing Thickness: 3/8" to 1/2"
- Dimensions: 3 15/16"h x 2 1/4"w
- Material: Brass
- Maximum Door Weights:
 - 2 Hinges - 110 lbs.
 - 3 Hinges - 140 lbs.
- Maximum Door Widths: 36"
- Self-Centering: yes with reversible 5° pivot pin
- Wall outage shims included

*Lifetime warranty for residential
3 year warranty for hospitality*



Oil Rubbed Bronze



Brushed Nickel



Gold



Chrome



Roman Bronze



Champagne Bronze



Matte Black



Yes, every HMI hinge includes our top of the line ribbed gasket for better grip on glass.

Make sure to pair with HMI *handles* and *clips*.

VIKING



Brushed Nickel

STYLE VIK537

(CHG HGTWSHADJ)

Heavy Hinge
Squared Edge
Adjustable

- Glazing Thickness: 1/2"
- Dimensions: 3 15/16" h x 2 1/4" w
- Material: Brass
- Maximum Door Weights:
2 Hinges - 110 lbs.
3 Hinges - 140 lbs.
- Maximum Door Widths: 36"
- Self-Centering: yes

*Lifetime warranty for residential
3 year warranty for hospitality*



Oil Rubbed
Bronze

Gold

Chrome

Roman Bronze

Champagne
Bronze

Matte Black



Yes, every HMI hinge includes our top of the line ribbed gasket for better grip on glass.

Make sure to pair with HMI *handles* and *clips*.

VIKING



STYLE VIK044

(CHG HGTWOPSH)

Heavy Hinge
Squared Edge
Offset Back Plate

- Glazing Thickness: 3/8" to 1/2"
- Dimensions: 3 15/16"h x 2 1/4"w
- Material: Brass
- Maximum Door Weights:
 - 2 Hinges - 100 lbs.
 - 3 Hinges - 130 lbs.
- Maximum Door Widths:
 - 1/2" Glass - 32"
 - 3/8" Glass - 34"
- Self-Centering: yes with reversible 5° pivot pin
- Wall outage shims included

*Lifetime warranty for residential
3 year warranty for hospitality*



Yes, every HMI hinge includes our top of the line ribbed gasket for better grip on glass.

Make sure to pair with HMI *handles* and *clips*.

VIKING



STYLE VIK180

(CHG H180GTGSH)

Heavy Hinge
Squared Edge
1800 Glass to Glass

- Glazing Thickness: 3/8" to 1/2"
- Dimensions: 3 15/16"h x 2 1/4"w
- Material: Brass
- Maximum Door Weights:
 - 2 Hinges - 110 lbs.
 - 3 Hinges - 140 lbs.
- Maximum Door Widths: 36"
- Self-Centering: yes with reversible 5° pivot pin
- Wall outage shims included

*Lifetime warranty for residential
3 year warranty for hospitality*



Oil Rubbed
Bronze



Brushed Nickel



Champagne Bronze



Chrome



Matte Black



Yes, every HMI hinge includes our top of the line ribbed gasket for better grip on glass.

Make sure to pair with HMI *handles* and *clips*.

PHOENIX



Polished Nickel

STYLE PHX01

(CHG HPVT)

Pivot Hinge

Beveled Edge

Top or Bottom Pivot

- Glazing Thickness: 5/16" and 3/8"
- Material: Brass
- Maximum Door Weights:
2 Hinges - 100 lbs.
- Maximum Door Widths: 31"
- Self-Centering: yes

*Lifetime warranty for residential
3 year warranty for hospitality*



Oil Rubbed Bronze



Brushed Nickel



Roman Bronze



Chrome



Champagne Bronze



Matte Black



Yes, every HMI hinge includes our top of the line ribbed gasket for better grip on glass.

Make sure to pair with HMI *handles* and *clips*. | See page 00 for Technical Specifications.

SENIOR PHOENIX



STYLE SRPHX01

(SR HPVT)

Pivot Hinge

Beveled Edge

Heavy Duty Top or Bottom

- Glazing Thickness: 1/2"
- Dimensions: 2 5/8"h x 4 3/4"w
- Material: Brass
- Maximum Door Weights: 145 lbs.
- Maximum Door Widths: 36"
- Self-Centering: yes

*Lifetime warranty for residential
3 year warranty for hospitality*



Yes, every HMI hinge includes our top of the line ribbed gasket for better grip on glass.

Make sure to pair with HMI *handles* and *clips*.

CASSINI



Polished Nickel

STYLE CAS01

(CHG HPVTS)

Pivot Hinge

Squared Edge

Top or Bottom

- Glazing Thickness: 5/16" to 3/8"
- Dimensions: 2"h x 3 5/8"w
- Material: Brass
- Maximum Door Weights: 100 lbs.
- Maximum Door Widths: 31"
- Self-Centering: yes
- Wall outage shims included

*Lifetime warranty for residential
3 year warranty for hospitality*



Oil Rubbed Bronze



Brushed Nickel



Roman Bronze



Chrome



Champagne Bronze



Matte Black



Yes, every HMI hinge includes our top of the line ribbed gasket for better grip on glass.

Make sure to pair with HMI *handles* and *clips*.

STYLE HMIB186

(CHG CTGTW)

Moveable Transom Clamp
Beveled Edge



Polished Nickel

- Glazing Thickness: 3/8" to 1/2"
- Dimensions: 2" x 2"
- Material: Brass
- Mounting Type:
Wall Mount or Glass to Glass
when used as a set
- Wall outage shims included

*Lifetime warranty for residential
3 year warranty for hospitality*



Oil Rubbed Bronze



Brushed Nickel



Roman Bronze



Chrome



Matte Black



Gold

Make sure to pair with HMI *hinges* and *handles*.

STYLE HMIB188

(CHG CT180GTG)

Moveable Transom Clamp
Beveled Edge



Polished Nickel

- Glazing Thickness: 3/8" to 1/2"
- Dimensions: 2" x 4 1/16"
- Material: Brass
- Mounting Type: Glass to Glass
- Wall outage shims included

*Lifetime warranty for residential
3 year warranty for hospitality*



Oil Rubbed Bronze



Brushed Nickel



Roman Bronze



Chrome



Matte Black



Gold

Make sure to pair with HMI *hinges* and *handles*.

STYLE HMIBU4

(CHG CGTW)
Wall Mount Clip
Beveled Edge

- Glazing Thickness: 3/8" to 1/2"
- Dimensions: 2" x 2"
- Material: Brass
- Mounting Type: Glass to Wall

*Lifetime warranty for residential
3 year warranty for hospitality*



Polished Nickel



Oil Rubbed Bronze



Brushed Nickel



Roman Bronze



Gold



Chrome



Champagne Bronze



Matte Black

Make sure to pair with HMI *hinges* and *handles*.

STYLE HMIB90

(CHG C90GTG)

Clip

Beveled Edge

90° Glass to Glass



Polished Nickel

- Glazing Thickness: 3/8" to 1/2"
- Dimensions: 2 1/2" x 2 1/2" x 2"
- Material: Brass
- Mounting Type: Glass to Glass

*Lifetime warranty for residential
3 year warranty for hospitality*



Oil Rubbed Bronze



Brushed Nickel



Roman Bronze



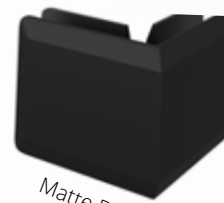
Gold



Chrome



Champagne Bronze



Matte Black

Make sure to pair with HMI *hinges* and *handles*.

STYLE HMIB135

(CHG C135GTG)

Clip

Beveled Edge

135° Glass to Glass



Polished Nickel

- Glazing Thickness: 3/8" to 1/2"
- Dimensions: 2 1/2" x 2 1/2" x 2"
- Material: Brass
- Mounting Type: Glass to Glass

*Lifetime warranty for residential
3 year warranty for hospitality*



Oil Rubbed Bronze



Brushed Nickel



Gold



Chrome



Roman Bronze



Matte Black

Make sure to pair with HMI *hinges* and *handles*.

STYLE HMIB180

(CHG C180GTG)

Clip

Beveled Edge

180° Glass to Glass



Polished Nickel

- Glazing Thickness: 3/8" to 1/2"
- Dimensions: 2" x 5"
- Material: Brass
- Mounting Type: Glass to Glass

*Lifetime warranty for residential
3 year warranty for hospitality*



Oil Rubbed Bronze



Brushed Nickel



Gold



Chrome



Roman Bronze



Matte Black

STYLE HMISU4

(CHG CGTWS)
Wall Mount Clip
Squared Edge



Polished Nickel

- Glazing Thickness: 3/8" to 1/2"
- Dimensions: 2" x 2"
- Material: Brass
- Mounting Type: Glass to Wall

*Lifetime warranty for residential
3 year warranty for hospitality*



Oil Rubbed Bronze



Brushed Nickel



Gold



Chrome



Champagne Bronze



Roman Bronze



Matte Black

Make sure to pair with HMI *hinges* and *handles*.

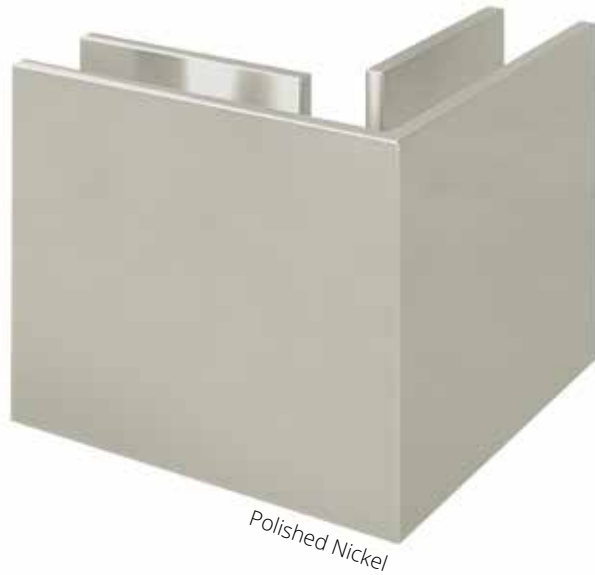
STYLE HMIS90

(CHG C90GTGS)

Clip

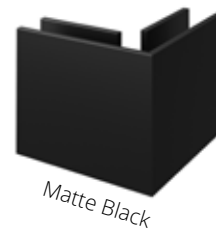
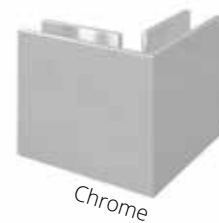
Squared Edge

90° Glass to Glass



- Glazing Thickness: 3/8" to 1/2"
- Dimensions: 2 1/2" x 2 1/2" x 2"
- Material: Brass
- Mounting Type: Glass to Glass

*Lifetime warranty for residential
3 year warranty for hospitality*



Make sure to pair with HMI *hinges* and *handles*.

STYLE HMIS180

(CHG C180GTGS)

Clip

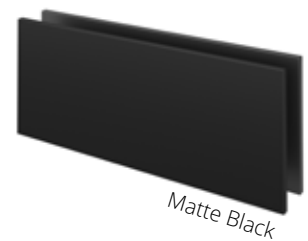
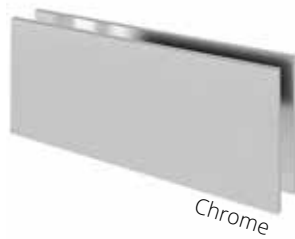
Squared Edge

180° Glass to Glass

- Glazing Thickness: 3/8" to 1/2"
- Dimensions: 2" x 5"
- Material: Brass
- Mounting Type: Glass to Glass



*Lifetime warranty for residential
3 year warranty for hospitality*



Make sure to pair with HMI *hinges* and *handles*.

STYLE HMIND4

(CHG CND)

Clip

Squared Edge

No-Drill Wall Clip



Polished Nickel

- Glazing Thickness: 5/16" to 3/8"
- Dimensions: 1 3/16" x 2 3/8"
- Material: Brass
- Mounting Type: Glass to Wall

*Lifetime warranty for residential
3 year warranty for hospitality*



Oil Rubbed Bronze



Brushed Nickel



Roman Bronze



Chrome



Matte Black

Make sure to pair with HMI *hinges* and *handles*.

STYLE HMISL90

(CHG CSL90)

Sleeve Over Glass Clamp

Squared Edge

90°



Polished Nickel

- Glazing Thickness: 5/16" to 1/2"
- Dimensions: 2 1/16" x 2 1/16"
- Material: Brass
- Mounting Type: Glass to Glass

*Lifetime warranty for residential
3 year warranty for hospitality*



Oil Rubbed Bronze



Brushed Nickel



Gold



Chrome



Champagne Bronze



Roman Bronze



Matte Black

Make sure to pair with HMI *hinges* and *handles*.

STYLE HMIS37R

(CHG CSL37R)

Sleeve Over Glass Clip

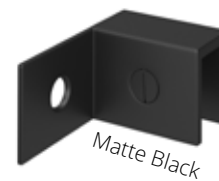
Squared Edge

Right Hand



- Glazing Thickness: 5/16" to 1/2"
- Dimensions: 1 3/8" x 2"
- Material: Brass
- Mounting Type: Wall Mount

*Lifetime warranty for residential
3 year warranty for hospitality*



Make sure to pair with HMI *hinges* and *handles*.

STYLE HMIS37L

(CHG CSL37L)

Sleeve Over Glass Clips

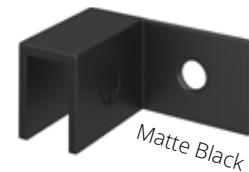
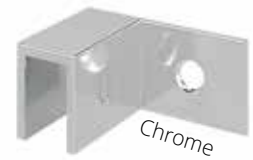
Squared Edge

Left Hand



- Glazing Thickness: 5/16" to 1/2"
- Dimensions: 1 3/8" x 2"
- Material: Brass
- Mounting Type: Wall Mount

*Lifetime warranty for residential
3 year warranty for hospitality*



Make sure to pair with HMI *hinges* and *handles*.

STYLE HMIS91

(CHG CSL91)

Sleeve Over Glass Clips

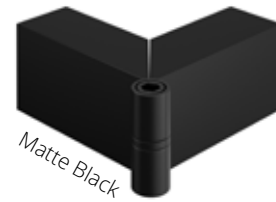
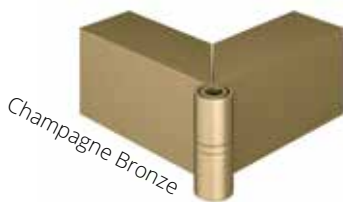
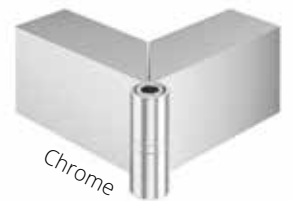
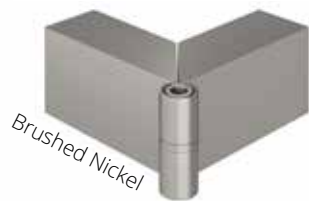
Squared Edge

Adjustable



- Glazing Thickness: 5/16" to 1/2"
- Dimensions: 2 1/8" x 2 1/8"
- Material: Brass
- Mounting Type: Glass to Glass

*Lifetime warranty for residential
3 year warranty for hospitality*



Make sure to pair with HMI *hinges* and *handles*.

STYLE HMISL135

(CHG CSL135)

Sleeve Over Glass Clips

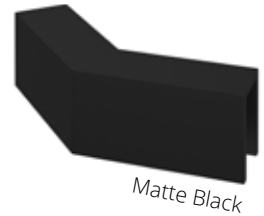
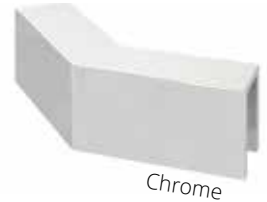
Squared Edge

135°



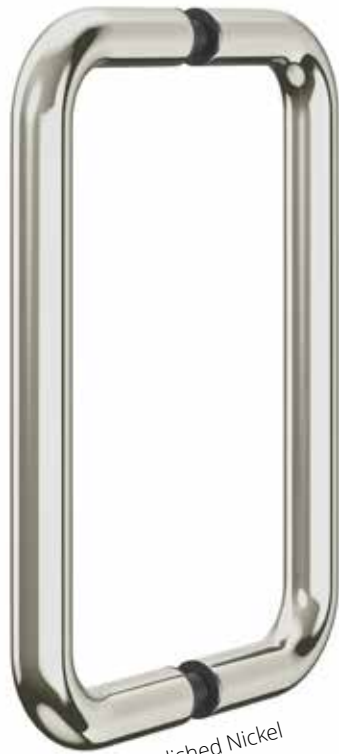
- Glazing Thickness: 5/16" to 1/2"
- Dimensions: 2 1/16" x 2 1/16"
- Material: Brass
- Mounting Type: Glass to Glass

*Lifetime warranty for residential
3 year warranty for hospitality*



Make sure to pair with HMI *hinges* and *handles*.

HMI



Polished Nickel

STYLES: HMI6X6 & HMI8X8

(CHG 6BTB) & (CHG 8BTB)

Pulls

Round

- Glazing Thickness: 1/4" to 1/2"
- Diameter: 3/4"
- Material: Stainless
- Mounting Center to Center: 6" or 8"
- Mounting Type: Glass Mount Back to Back
- Includes soft and rigid plastic washers

*Lifetime warranty for residential
3 year warranty for hospitality*



Oil Rubbed Bronze



Chrome



Gold



Roman Bronze



Brushed Nickel



Champagne Bronze



Matte Black



Oil Rubbed Bronze Painted

Make sure to pair with HMI *hinges* and *clips*.

STYLES: HMI6SM & HMI8SM

(CHG 6SM) & (CHG 8SM)

Pulls

Round



Brushed Nickel

- Glazing Thickness: 1/4" to 1/2"
- Diameter: 3/4"
- Material: Stainless
- Mounting Center to Center: 8"
- Mounting Type: Glass Mount

*Lifetime warranty for residential
3 year warranty for hospitality*



Chrome



Matte Black



Polished Nickel

STYLES: HMILP6X6

(CHG LP 6BTB)

Pulls

Round - Ladder Style

- Glazing Thickness: 1/4" to 1/2"
- Diameter: 3/4"
- Material: Stainless
- Mounting Center to Center: 6"
- Mounting Type: Glass Mount Back to Back

*Lifetime warranty for residential
3 year warranty for hospitality*



Oil Rubbed Bronze



Chrome



Brushed Nickel



Champagne Bronze



Oil Rubbed Bronze
Painted



Matte Black

STYLES: HMILP8X8

(HMILP8X8)

Pulls

Round - Ladder Style



Polished Nickel

- Glazing Thickness: 1/4" to 1/2"
- Diameter: 3/4"
- Material: Stainless
- Mounting Center to Center: 8"
- Mounting Type: Glass Mount Back to Back

*Lifetime warranty for residential
3 year warranty for hospitality*



Oil Rubbed Bronze



Chrome



Gold



Brushed Nickel



Champagne Bronze



Roman Bronze



Matte Black

Make sure to pair with HMI *hinges* and *clips*.

STYLE HMICR6X6

(CHG CR 6BTB)

Pulls

Round

Crescent Style



Brushed Nickel

- Glazing Thickness: 1/4" to 1/2"
- Diameter: 3/4"
- Material: Stainless
- Mounting Center to Center: 6"
- Mounting Type: Glass Mount
Back to Back

*Lifetime warranty for residential
3 year warranty for hospitality*



Oil Rubbed Bronze



Chrome



Matte Black



Oil Rubbed Bronze
Painted

STYLES: HMISQ6X6

(CHG SQ 6BTB)

Pulls

Square



Brushed Nickel

- Glazing Thickness: 1/4" to 1/2"
- Diameter: 3/4"
- Material: Brass
- Mounting Center to Center: 6"
- Mounting Type: Glass Mount
Back to Back

*Lifetime warranty for residential
3 year warranty for hospitality*



Oil Rubbed Bronze



Chrome



Matte Black



Oil Rubbed Bronze
Painted

HMI



Brushed Nickel

STYLES: HMISQ8X8

(CHG SQ 8BTB)

Pulls

Square

- Glazing Thickness: 1/4" to 1/2"
- Diameter: 3/4"
- Material: Brass
- Mounting Center to Center: 8"
- Mounting Type: Glass Mount Back to Back

*Lifetime warranty for residential
3 year warranty for hospitality*



Oil Rubbed Bronze



Chrome



Matte Black



Champagne Bronze

Make sure to pair with HMI *hinges* and *clips*.

STYLE HMI30WK

(CHG CWK)
Metal Washers

- Material: Brass



Polished Nickel

*Lifetime warranty for residential
3 year warranty for hospitality*



Oil Rubbed Bronze



Chrome



Gold



Roman Bronze



Champagne Bronze



Brushed Nickel



Matte Black



Oil Rubbed Bronze
Painted

Make sure to pair with HMI *hinges* and *clips*.

STYLES: HMITB16,
HMITB18, HMITB20,
HMITB22, HMITB24,
HMITB27 & HMITB30
(CHG TB16), (CHG TB18), (CHG TB20), (CHG
TB22), (CHG TB24), (CHG TB27) & (CHG TB30)
Towel Bars
Round



Brushed Nickel



Concave caps

- Glazing Thickness: 1/4" to 1/2"
- Diameter: 3/4"
- Material: Stainless
- Mounting Type: Glass Mount
Single sided
- Concave caps included

*Lifetime warranty for residential
3 year warranty for hospitality*



Oil Rubbed Bronze



Chrome



Gold



Roman Bronze



Oil Rubbed Bronze
Painted

NOTE: Color options vary by size. Please inquire.

Make sure to pair with HMI *hinges* and *clips*.

STYLES:
HMIBTB18X18 &
HMIBTB24X24
(CHG 18BTB) & (CHG 24BTB)
Towel Bars
Round

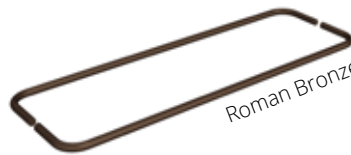


- Glazing Thickness: 1/4" to 1/2"
- Diameter: 3/4"
- Material: Stainless
- Mounting Type: Glass Mount
Back to Back

*Lifetime warranty for residential
3 year warranty for hospitality*



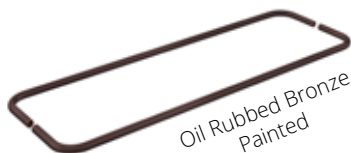
Chrome



Roman Bronze



Gold



Oil Rubbed Bronze
Painted



Matte Black

NOTE: Color options vary by size. Please inquire.

Make sure to pair with HMI *hinges* and *clips*.

HMI

STYLES:

HMIBTB6X18

HMIBTB6X20

HMIBTB6X22

HMIBTB6X24

(CHG TB618), (CHG TB620), (CHG TB622)

& (CHG TB624)

Towel Bars

Round

- Glazing Thickness: 1/4" to 1/2"

- Diameter: 3/4"

- Material: Stainless

- Mounting Type: Glass Mount
Back to Back

*Lifetime warranty for residential
3 year warranty for hospitality*



NOTE: Color options vary by size. Please inquire.

Make sure to pair with HMI *hinges* and *clips*

STYLE HMIRH

(CHG CRH)
Hooks
Round



Brushed Nickel

- Glazing Thickness: 5/16" to 1/2"
- Material: Brass
- Mounting Type: Through-Glass, UV Adhesive, or Wall Mount

*Lifetime warranty for residential
3 year warranty for hospitality*



Chrome



Oil Rubbed Bronze



Roman Bronze



Matte Black

Make sure to pair with HMI *hinges* and *clips*.

STYLE HMIKSM

(CHG KSM)

Knobs

Round



- Glazing Thickness: 1/4" to 1/2"
- Diameter: 3/4"
- Material: Stainless
- Mounting Type: Glass Mount - Back To Back
- Concave caps included

*Lifetime warranty for residential
3 year warranty for hospitality*



Make sure to pair with HMI *hinges* and *clips*.

STYLE HMIKCBTB

(CHG KCBTB)

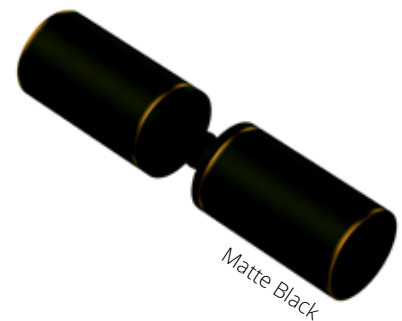
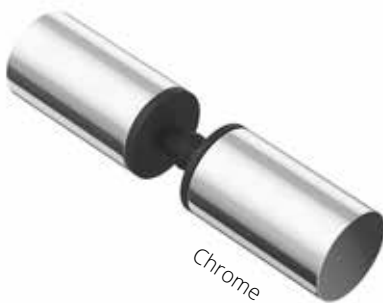
Cushioned Knobs

Round



- Glazing Thickness: 1/4" to 1/2"
- Diameter: 3/4"
- Material: Stainless
- Mounting Type: Glass Mount - Back To Back

*Lifetime warranty for residential
3 year warranty for hospitality*



Make sure to pair with HMI *hinges* and *clips*.

STYLE ZSS4104A Heavy Shower Door Headers



Brushed Nickel

- Glazing Thickness: 3/8" to 1/2"
- Dimensions:
1 1/4"h x 1 1/4"w x 144"l
- Material: Aluminum
- Profile: Curved

*Lifetime warranty for residential
3 year warranty for hospitality*



Chrome



Oil Rubbed Bronze



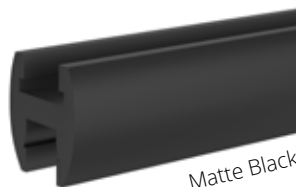
Gold



Roman Bronze



Champagne Bronze



Matte Black

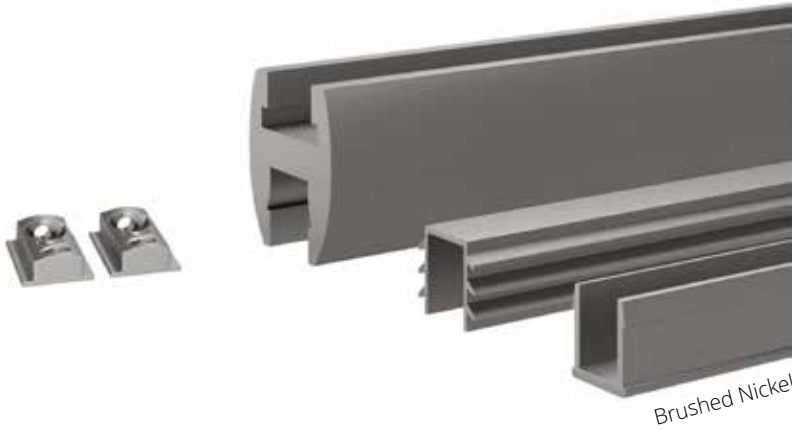


Oil Rubbed Bronze
Painted

Make sure to pair with HMI *handles* and *clips*.

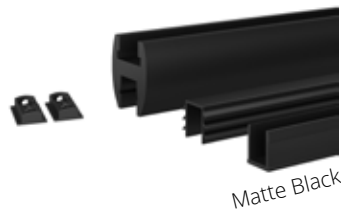
HMI

STYLES: CHGCHK144 & CHGCHK72 Heavy Glass Header Kit



- Glazing Thickness: 3/8 - 1/2"
- Length: 144" or 72"
- Material: Aluminum

*Lifetime warranty for residential
3 year warranty for hospitality*



Gold Finish Available
but not shown

Make sure to pair with HMI *handles* and *clips*.

STYLE ZSS4102 Snap in Filler



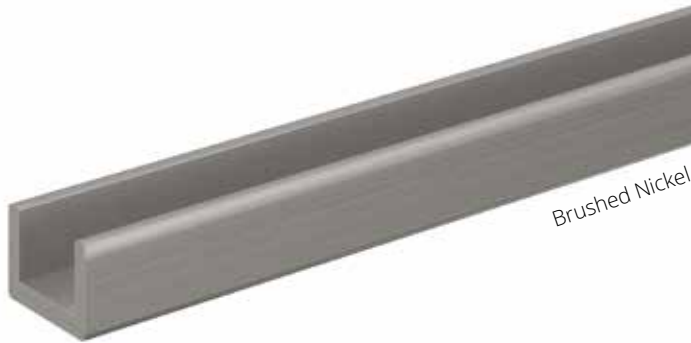
- Length: 122"
- Material: Aluminum
- Profile: Flat

*Lifetime warranty for residential
3 year warranty for hospitality*



Make sure to pair with HMI *handles* and *clips*.

STYLE ZSS4103 Shallow U-Channel for 3/8" Glass



- Length: 144"
- Material: Aluminum
- Profile: 3/8" Deep U-Channel

*Lifetime warranty for residential
3 year warranty for hospitality*



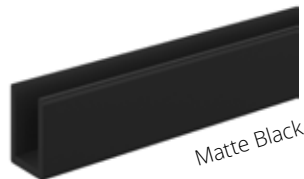
Make sure to pair with HMI *handles* and *clips*.

STYLE ZSS4104 Deep U-Channel for 3/4" Glass



- Length: 144"
- Material: Aluminum
- Profile: 3/4" Deep U-Channel

*Lifetime warranty for residential
3 year warranty for hospitality*



Make sure to pair with HMI *handles* and *clips*.

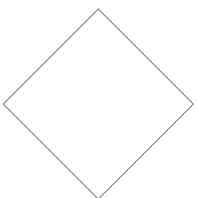
HMI

STYLE ZSS4504
Extra Deep U-Channel
for 3/8" Glass



- Length: 144"
- Material: Aluminum
- Profile: 1 1/4" Deep U-Channel

*Lifetime warranty for residential
3 year warranty for hospitality*



Yes, every HMI hinge includes our top of the line ribbed gasket for better grip on glass.

Make sure to pair with HMI *handles* and *clips*.

HMI
INNOVATORS IN GLASS

STYLE ZSS5103
Shallow U-Channel
for 1/2" Glass



- Length: 144"
- Material: Aluminum
- Profile: 3/8" Deep U-Channel

*Lifetime warranty for residential
3 year warranty for hospitality*



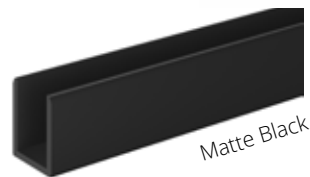
Make sure to pair with HMI *handles* and *clips*.

STYLE ZSS5104 Deep U-Channel for 1/2" Glass



- Length: 144"
- Material: Aluminum
- Profile: 3/4" Deep U-Channel

*Lifetime warranty for residential
3 year warranty for hospitality*



Make sure to pair with HMI *handles* and *clips*.



C4101-A



C4101-135



C4101-90



C4101-W

STYLES:

C4101-A

C4101-135

C4104-90

C4101-W

Standard Corner, Adjustable
Header Brackets

- Material: Brass
- Profile: Flat

*Lifetime warranty for residential
3 year warranty for hospitality*